

INTERNATIONAL MEASUREMENT CERTIFICATE

Name of Race

Distance

Location

Country

Date of Race

Date of Measurement

Elevation Change

Separation

% of race distance

Name(s) of the measurer(s)

World Athletics – AIMS Grade

Country

Certificate Number

Expiry Date

International Measurement Administrator

Registered On

Signed



In cooperation with

This certificate certifies that the length of the above road race has been established by an accredited World Athletics – AIMS Grade A or B measurer employing the method of a bicycle calibrated with a “Jones Counter”. It remains valid for 5 years subject to the course defined in the full measurement report submitted by the measurer being unchanged in any way. Any modifications to the course, however minimal, will nullify this Certificate and require a new measurement to be undertaken. Possession of this certificate does not indicate any sanction of the race by World Athletics or membership of AIMS.

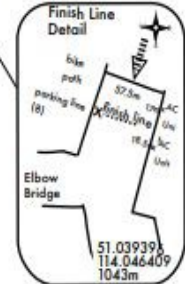
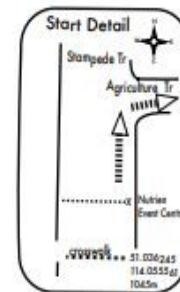
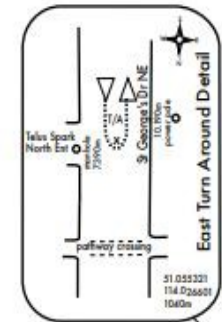
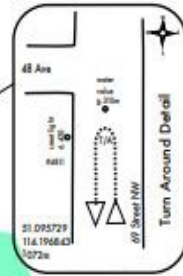


Calgary Marathon

WA & AIMS Certified
CAN-2023-063B
Certification Expires Dec 31/2027

Stampede - ER
Agriculture Tr - ER
14 Av - ER
5A Street - ER
12 Av - ER
Olympic Wy - ROC
9 Av - ROC
12 St/Bridge - ROC
Zoo Rd - ROC
Memorial Dr Acc - ER
12 Street - ROC
St George's Dr - ROC
turn point
St George's Dr - ROC
12 Street - ROC
Centre Av - ROC
6 Street - ROC
Meredith Rd - ER
4 Street - ROC
Memorial Dr - LOC
Centre St Bridge - ROC
Riverfront Av - ROC
5 Street - ROC
Confluence Wy - ROC
6 Av - ROC
6 Street - ROC
9 Av - ROC
Olympic Wy - RCL
11 Av - ROC
14 Street - RCL
Kensington Rd - RCL
10A St - ROC
Memorial Dr - ROC
Parkdale By - LOC
3 Av - LOC
Bowness Rd - LOC
42 Street - RCL
19 Av - RCL
52 Street - RCL
Jame Hextal Bridge - ER
Bowness Rd - RCL
69 Street - ROC
turn point
69 Street - ROC
Bowness Rd - LOC
James Hextal Bridge - ER
52 Street - LCL
19 Av - RCL
42 Street - RCL
Bowness Rd - RCL
3 Av - RCL
Parkdale By - RCL

Memorial Dr - ROC
Centre Street Br - LOC
Riverfront Av - LOC
5 Street - LOC
Confluence Wy - LOC
6 Av - LOC
6 Street - LCL
9 Av - ROC
Olympic Wy - LCL
12 Av - ER
7 Street - ER
MacDonald Bridge - ER
MacDonal Av - ER
Enmax Park Rd - ER
Entire Road - ER
Right of Centre - ROC
Right Curb Lane - RCL
Left of Centre - LCL
Left Curb Lane - LCL



All split locations (each km & turn point) are GPS referenced.

From start line on Stampede trail to the finish line at the Enmax Park all corners are to be coned and marshalled.

This course is measured to the guidelines defined by governing bodies Athletics Canada, AIMS and World Athletics.

Course Measurers: Marcel LaMontagne 403.874.1185, Jon Bird 403.618.2473
Course Measured: April 6, 2025

CAN-2023-063B

Calgary 2025 Marathon Race Distance Descriptions		
Km Point	Waymarks Lat°/Lon°	Location Description
Start	51.035964 114.055700	Stampede Tr, approx 50m south of Agriculture Tr
1 km	51.041070 114.051397	12 Av * Olympic Way * 5 Street, 20m east
2 km	51.043870 114.045647	9 Av, mid point to east & west entrances to Fort Calgary
3 km	51.042510 114.033172	12 Street bridge, 40m south, south bridge deck plate expansion joint
4 km	51.047457 114.032326	12 Street overpass, Memorial Dr, 35m north, south bridge deck expansion joint
5 km	51.052240 114.025773	St George Dr, 40m south, south entrance to Telus Spark
turn point 5,348m	51.055321 114.026604	St Georges Dr, 50m south crossing pathway, 33m south north entrance to Telus Spark
6 km	51.049407 114.026195	St George Dr, 10m west pathway access to Zoo parking lot and pathway to Tom Campbell Hill
7 km	51.052370 114.035278	Centre Av * 11A Street, 15m west
8 km	51.051921 114.049050	4 Street NE * Meredith Rd, 50m south
9 km	51.053543 114.062647	Centre Street bridge, 20m south, north entrance
10 km	51.048934 114.051785	Riverside Av * 5 Street overpass, directly under
11 km	51.044182 114.053255	Olympic Way * 9 Av, intersection, south side
12 km	51.042440 114.064568	11 Av * 4 Street, 75m east
13 km	51.042858 114.078809	11 Av * 7 Street, 5m east
14 km	51.043249 114.093060	11 Av * 13 Street, 40m east
15 km	51.051372 114.094595	14 Street at 414 Kensington Mews condo's, mid point, NBD

16 km	51.050817 114.091321	Memorial Dr * Memorial Dr out & back, 25m east
17 km	51.049120 114.104639	Memorial Dr * 19 Street, 20m east
18 km	51.050356 114.118433	Parkdale Bv * Crowchild Tr overpass, 110m west, in line with Enmax substation
19 km	51.055398 114.129953	Parkdale Bv * 29 Street, 10m west
20 km	51.060301 114.141863	3 Av * 37 Street, 45m west
21 km	51.066174 114.151948	Bowness Rd * 16 Av overpass, 10m west
21,097.5 km, 1/2 way	51.066720 114.152667	Bowness Rd * south side pathway to 16 Av overpass, in line with
22 km	51.073063 114.159237	19 Av * 46 Street, 12m east
23 km	51.078484 114.168716	52 Street * 18 Av circle, 10m south
24 km	51.083581 114.174616	Bowness Rd * 60 Street, 90m west, in :one with #6128
25 km	51.088591 114.186443	Bowness Rd * 67 Street, 50m east
26 km	51.094376 114.194301	69 Street * 47 Av, in line with, in line with #4639
West turn point 26,198m	51.095729 114.196893	69 Street * 48 Av, 38m south, in line with #4809
27 km	51.089916 114.189776	69 Street NBD * 69 Street WBD, at corner of,
28 km	51.085516 114.179463	Bowness Rd * 63 Street, 40m east
29 km	51.078965 114.172284	Hextall Bridge, mid point, west & mid span sections
30 km	51.075700 114.162846	19 Av * 48 Street, 5m west
31 km	51.068820 114.153644	19 Av * 42 Street, 50m west

32 km	51.062222 114.146491	Bowness Rd * Point Drive, in intersection
33 km	51.056932 114.134950	Parkdale Bv * 33 Street, 30m east
34 km	51.052741 114.122393	Parkdale Bv 8 Kensington Rd, 30m west
35 km	51.048880 114.111833	Memorial Dr * ramp from Crowchild Tr EBD onto Memorial Dr, 110m west
36 km	51.049019 114.097623	Memorial Dr * 16 Street, 15m east
37 km	51.052250 114.084662	Memorial Dr * LRT overpass, 60m west
38 km	51.057465 114.073330	Memorial Dr * 4A Street, 20m west
39 km	51.053359 114.062617	Centre Street bridge, 40m from north end
40 km	51.049022 114.051444	Riverfront Av, under 5 Av flyover
41 km	51.044106 114.053186	Olympic Way * 9 Av, 10m south
42 km	51.041022 114.044282	Enmax Park, Agriculture Tr * MacDonald Av, 10m south
Finish	51.039396 114.046406	Enmax Park Rd, 17m from AC unit on post to SE, 18.5m from AC unit on post to NE at marked traffic parking line.