



ATHLETICS CANADA

ROAD RACE MEASUREMENT CERTIFICATE

Race Information

Name of the course Jordan's Run the Runway
Certificate number ON-2022-018-DRY Distance 5 km Race date Aug 27, 2022
City London Province ON
Race contact name Janice Strickland Race contact email janicestrickland@rogers.com

Course Information

Start elevation 273 m Finish elevation 273 m
Elevation change (m/km) 0 m/km Percent separation 0%

Measurer Information

Measurer name Bernard Conway measurer@rogers.com 519-641-6889
Measurement date Jun 13, 2022 Expiry date Dec 31, 2031

Official Notice

Based on examination of data provided by the above named measurer, the course described above and in the map attached is hereby certified as reasonably accurate in measurement according to the standards adopted by the **Road Running Technical Council**. If any changes are made to the course, this certification becomes void, and the course must then be recertified.

Validation of Course

In the event a **National Open Record** is set on this course, or at the discretion of **Athletics Canada**, a validation remeasurement may be required to be performed by a qualified measurer. If such a remeasurement shows the course to be short, then all pending records will be rejected and the course certification will be cancelled.

As Nationally Certified by

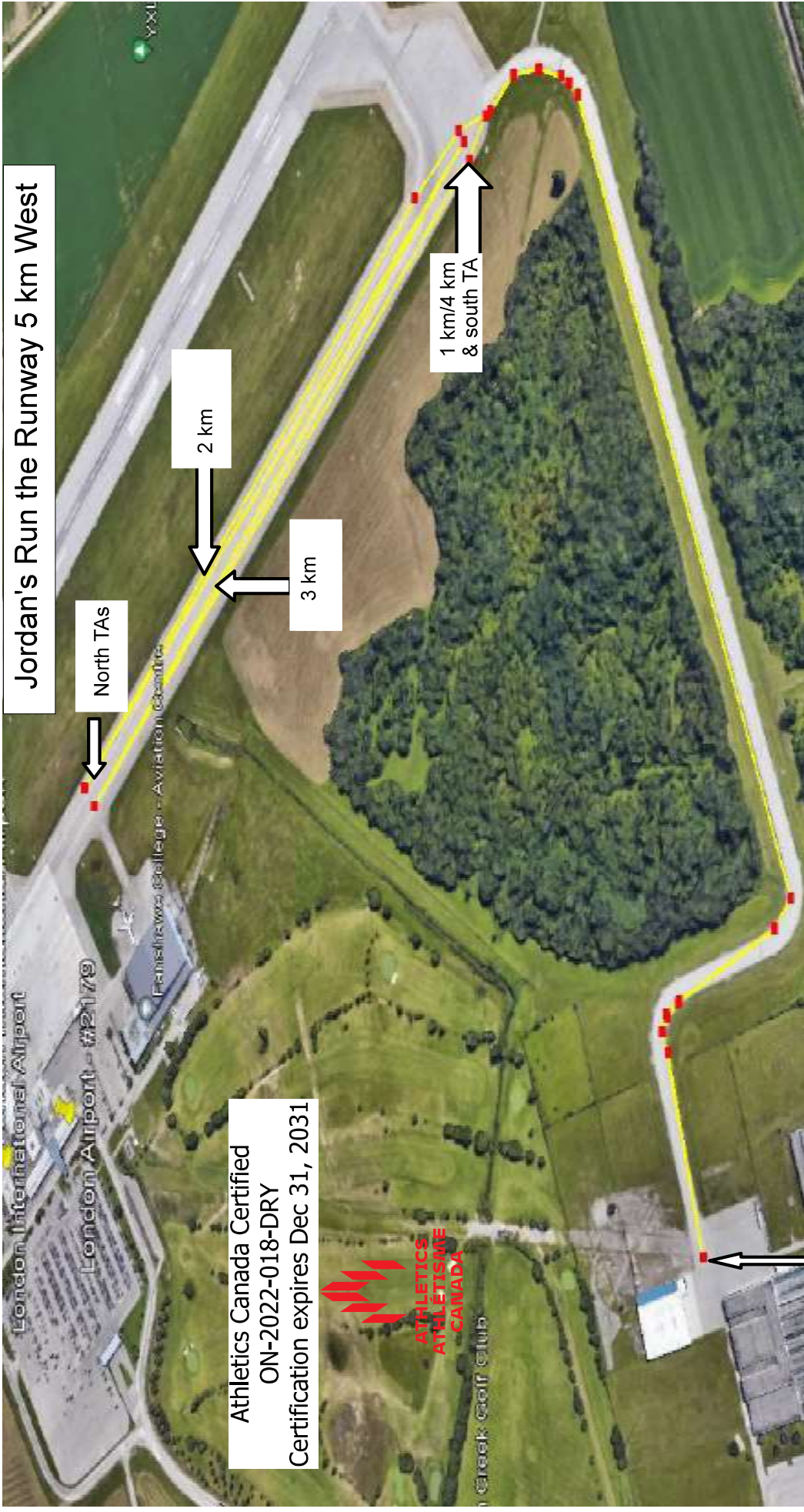
Signature of certifier

June 29, 2022

Date

Any inquiries regarding this certificate should be directed to coursemeasurement@athletics.ca





Jordan's Run the Runway 5 km West

North TAs

2 km

3 km

1 km/4 km & south TA

Athletics Canada Certified
 ON-2022-018-DRY
 Certification expires Dec 31, 2031



Start – is even with the east end of the Maintenance Building of Diamond Aircraft (north side) in line with the south side of the taxiway which goes from Diamond to the London Airport.
 1 km – is 9 m south of the south end of the west runway on the taxi lane from Diamond Aircraft.
 1.75 km – is the north turnaround which is 10.75 m south of the blue runway light (E side of taxiway) opposite the centre of the taxi lane to Fanshawe College Aviation Building between the 1st and 2nd lanes counting from the east to the west.
 2 km – heading south, 250 m south of north turnaround in the 2nd lane counting from east to west, 15.9 m S of the 5th blue light and 61.78 m S of the 2nd drain on W side of the W runway counting from the S end of the taxiway at Fanshawe Aviation. Runners are heading south.
 Course is spr (shortest possible route) with 2 out/back sections between 1 km & 4 km. Each section is 750 m long.

2.5 km - is the south turnaround, even with the 1 km mark but on the painted lane markings between the 2nd and 3rd lanes (counting from the east to the west)
 3 km – heading north, 250 m south of the north turnaround in the 3rd lane (counting from the east to the west), 15.9 m S of the 5th blue light and 61.78 m S of the 2nd drain counting from the taxiway to Fanshawe, on the W side of the runway. Runners are heading north.
 3.25 km – is the north turnaround which is 10.75 m south of the blue runway light (E side of taxiway) opposite the centre of the taxiway to Fanshawe College Aviation Building between the 3rd & 4th lanes (counting east to west)
 4 km - same as the 1 km
 5 km - same as the start