



# ATHLETICS CANADA

## ROAD RACE MEASUREMENT CERTIFICATE

### Race Information

Name of the course \_\_\_\_\_  
Certificate number \_\_\_\_\_ Distance \_\_\_\_\_ Race date \_\_\_\_\_  
City \_\_\_\_\_ Province \_\_\_\_\_  
Race contact name \_\_\_\_\_ Race contact email \_\_\_\_\_

### Course Information

Start elevation \_\_\_\_\_ Finish elevation \_\_\_\_\_  
Elevation change \_\_\_\_\_ Percent separation \_\_\_\_\_

### Measurer Information

Measurer name \_\_\_\_\_  
Measurement date \_\_\_\_\_ Expiry date \_\_\_\_\_

### Official Notice

Based on examination of data provided by the above named measurer, the course described above and in the map attached is hereby certified as reasonably accurate in measurement according to the standards adopted by the **Road Running Technical Council**. If any changes are made to the course, this certification becomes void, and the course must then be recertified.

### Validation of Course

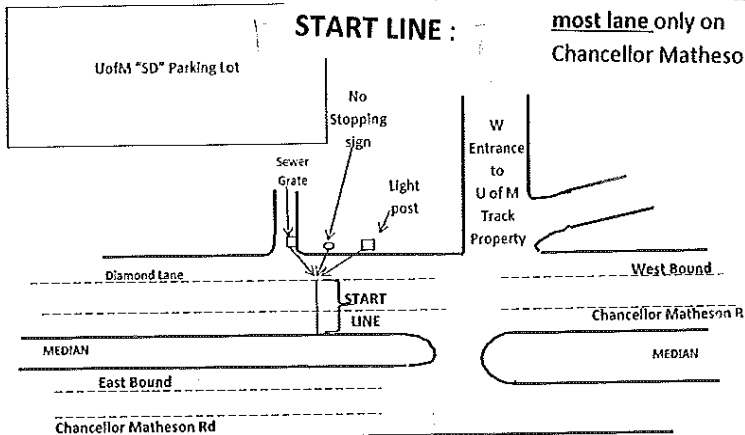
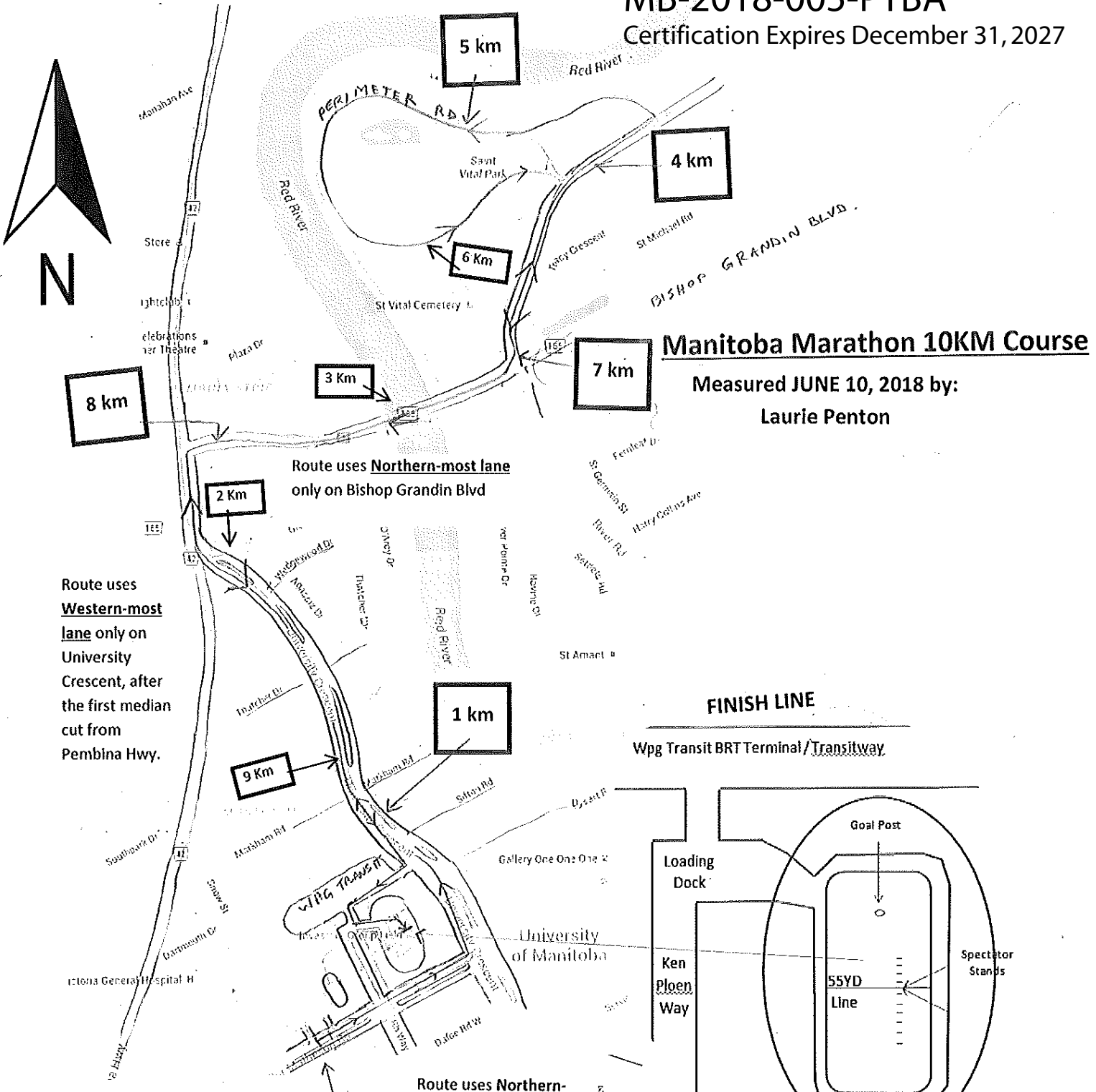
In the event a **National Open Record** is set on this course, or at the discretion of **Athletics Canada**, a validation remeasurement may be required to be performed by a qualified measurer. If such a remeasurement shows the course to be short, then all pending records will be rejected and the course certification will be cancelled.

### As Nationally Certified by

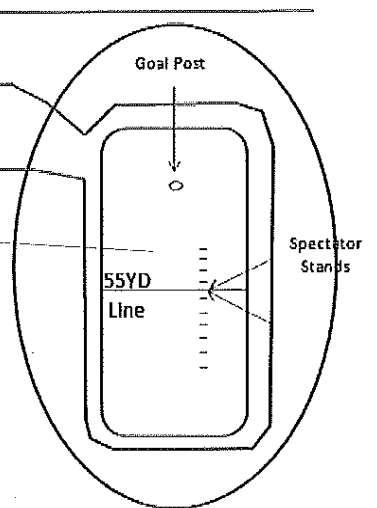
\_\_\_\_\_  
Signature of certifier  Paul T.B. Adams \_\_\_\_\_  
Date \_\_\_\_\_

Any inquiries regarding this certificate should be directed to [coursemeasurement@athletics.ca](mailto:coursemeasurement@athletics.ca)





- Start Line @ edge of Diamond lane
- 7.250 M from corner of Sewer Grate
  - 5.960M from corner of No Stopping Sign
  - 12.390M from corner of light post base



- Finish Line @ 55 YD line, along hash marks on East side of field
- 24.550M from electrical outlet in line with 47Yd Line to North
  - 25.060M from electrical outlet in line with 45Yd Line to South
  - 23.440M from base of stands, in line with 55Yd Line (90°)