



# ATHLETICS CANADA

## ROAD RACE MEASUREMENT CERTIFICATE

### Race Information

Name of the course Americas Masters Games 10K Run

Certificate number BC-2016-097-BDC Distance 10 km Race date Aug. 27/2016

City Vancouver Province BC

Race contact name Graeme Fell Race contact email runner@intergate.bc.ca

### Course Information

Start elevation 87.5 m Finish elevation 87.5 m

Elevation change 0 m/km Percent separation 0.25

### Measurer Information

Measurer name Geoffrey Buttner

Measurement date Aug. 14/2016 Expiry date Dec. 31/2025

## Official Notice

Based on examination of data provided by the above named measurer, the course described above and in the map attached is hereby certified as reasonably accurate in measurement according to the standards adopted by the **Road Running Technical Council**. If any changes are made to the course, this certification becomes void, and the course must then be recertified.

### Validation of Course

In the event a **National Open Record** is set on this course, or at the discretion of **Athletics Canada**, a validation remeasurement may be required to be performed by a qualified measurer. If such a remeasurement shows the course to be short, then all pending records will be rejected and the course certification will be cancelled.

### As Nationally Certified by

 Aug. 24/2016  
Signature of certifier Date

Any inquiries regarding this certificate should be directed to [coursemeasurement@athletics.ca](mailto:coursemeasurement@athletics.ca)



# Americas Masters Games 10K Run

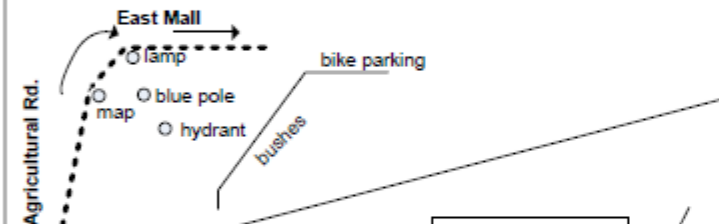
## Notes:

- The entire run is on pedestrian pathways with the exception of a brief segment on the road just after the start line along East Mall between Agricultural Rd and Memorial Rd.
- Participants have full use of the paths as set out in this map
- The certification is not valid if the course is not set out in accordance with this map.
- Map and detail areas not drawn to scale.



## Final Turn Detail

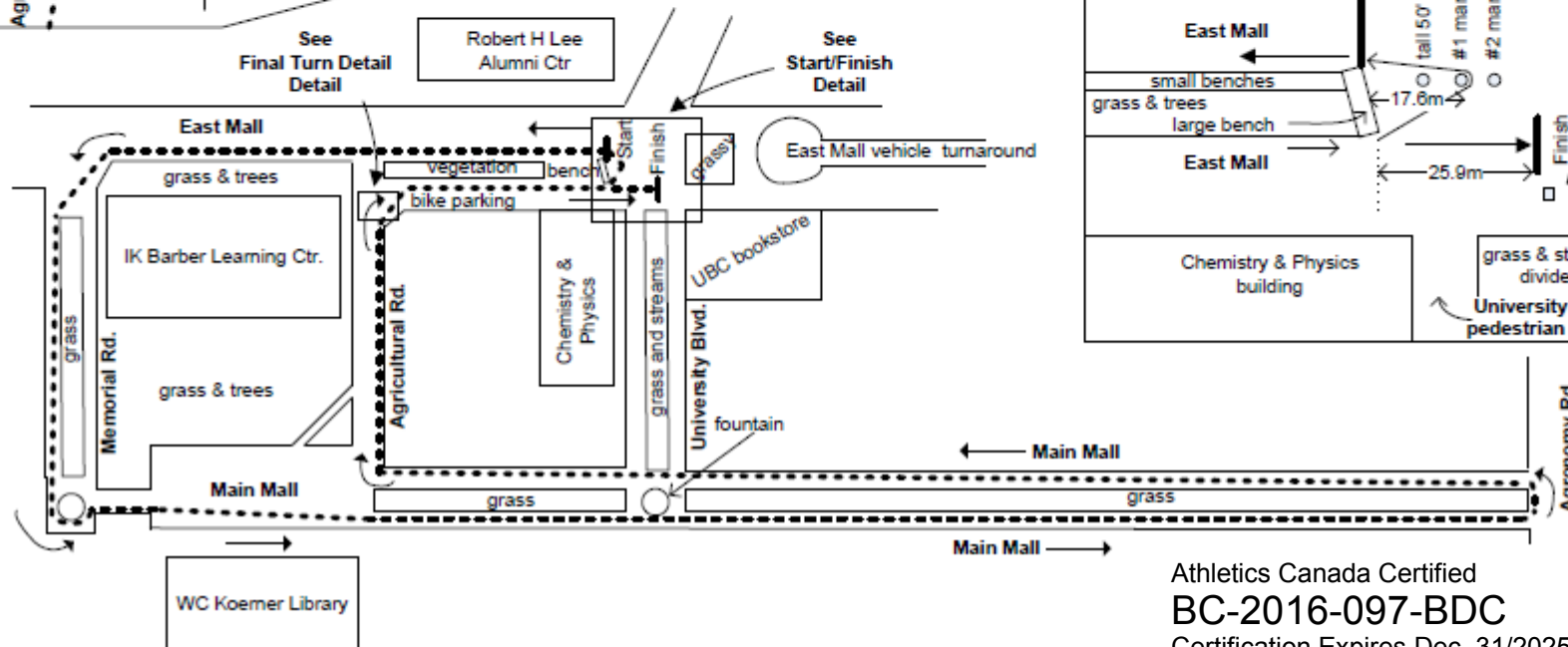
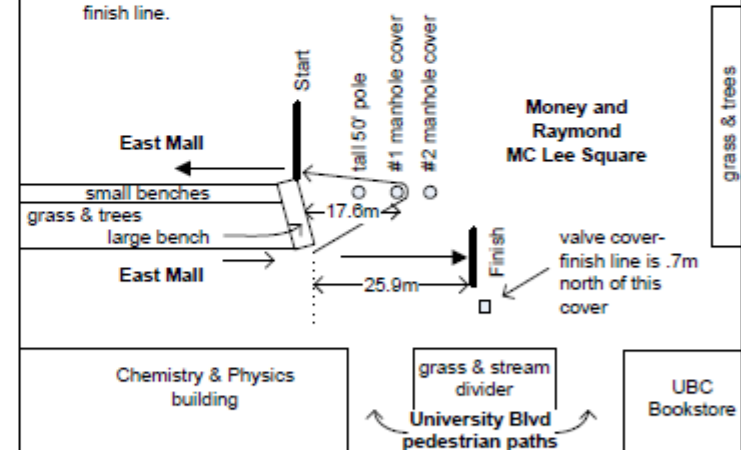
At the intersection of Agricultural Rd and East Mall on the pedestrian pathway there is a cluster of 4 obstructions (lamp post, campus map, blue painted pole with emergency phone and a fire hydrant). The runners must be restricted to running a tangent taking them outside of (east) of these obstructions in order not to run a shorter distance.



## Start/Finish Detail

The start and finish lines are located in the Money and Raymond MC Lee Square, a large pedestrian space that forms at the intersection of East Mall and University Blvd.

- A large bench marks the northern edge of this square, part of a raised grassy area dividing the east and west sides of East Mall.
- The start line is at the southeast corner edge of the large bench and the runners head north
- The finish line is 25.9m south of the southwest corner edge of the large bench, .7m north of a small 2' x 2' valve covering
- There are two manhole covers just beyond the tall pole. The first of which is 17.6m south of the large bench (reference '#1 manhole cover').
- Runners must complete 3 full laps of the course, running around the #1 manhole cover. They run a 4<sup>th</sup> lap but when they reach the southwest edge of the large bench for the 4<sup>th</sup> time, they run straight (south) 25.9m to the finish line.



Athletics Canada Certified  
 BC-2016-097-BDC  
 Certification Expires Dec. 31/2025